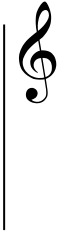
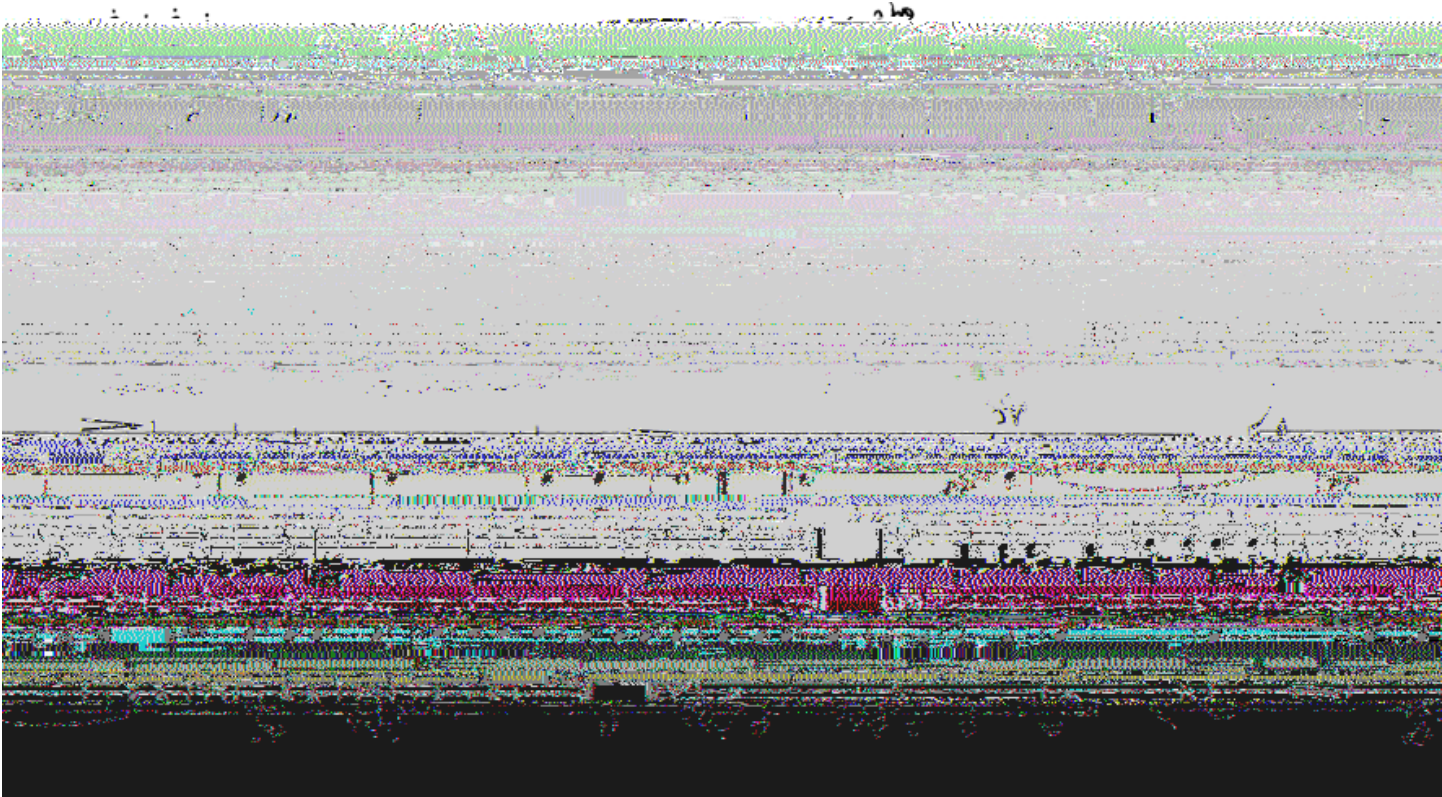
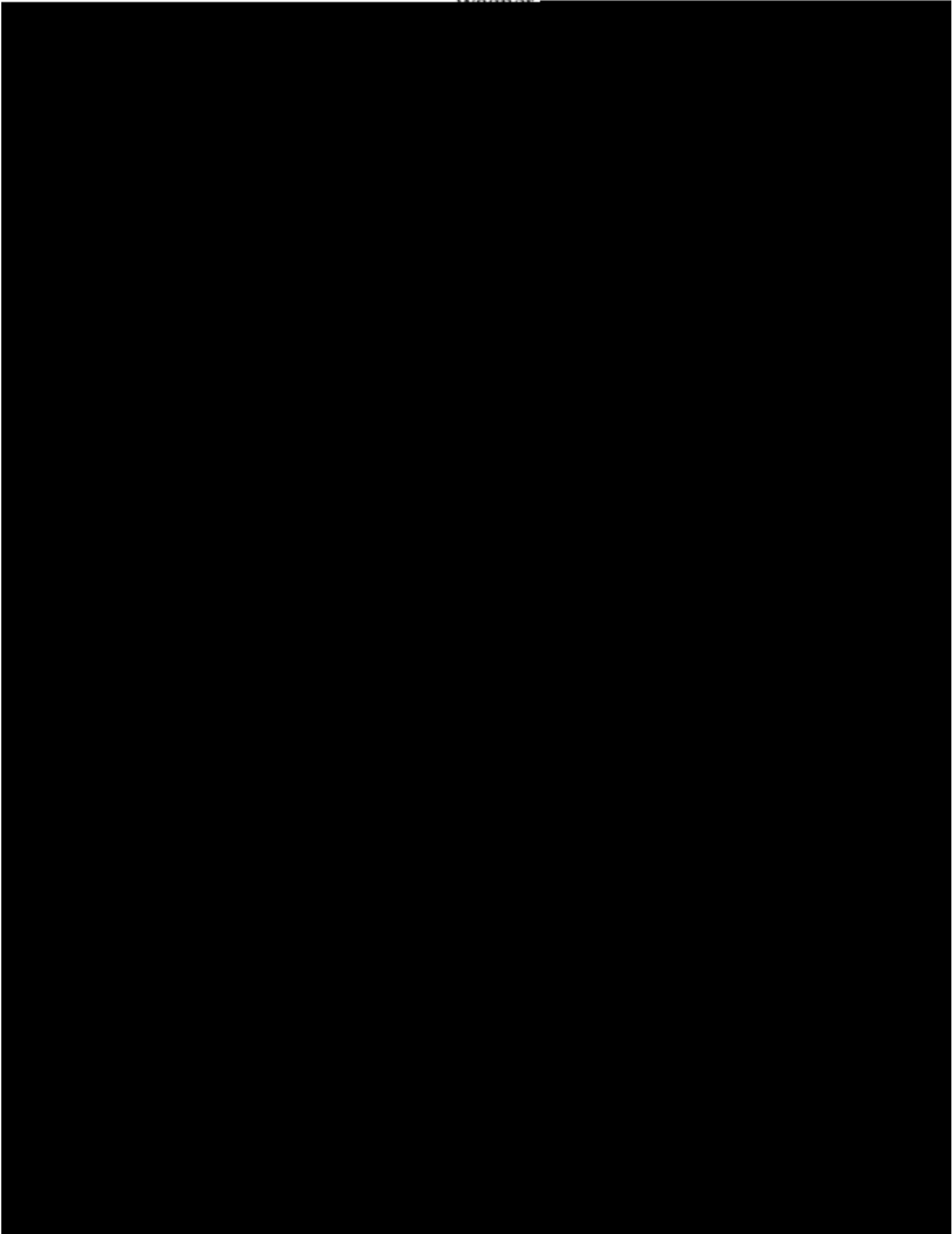


30-3 Augmented Sixths - Analysis

Haydn, Piano Sonata Hob. XVI: 20 in c minor, mvt. 3, mm. 1-6







Schubert, String Quintet in C Major, D. 956, mvt 4, mm. 416-end

A musical score consisting of five staves. The first two staves are treble clefs, the third is a double bar line, the fourth is a bass clef, and the fifth is another bass clef. The score is divided into five measures by vertical bar lines. In the first measure of the fourth staff, there is a wavy line with the word *tr* above it. In the first measure of the fifth staff, there are two parallel lines that taper to a point towards the right.



Chopin, Prelude in e minor, op. 28 no. 4, mm. 19-end  
(be mindful of the enharmonic spelling!)

19

P

p

? # C